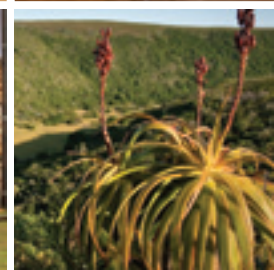
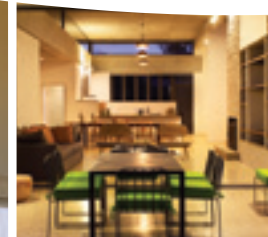


HOUSE 4



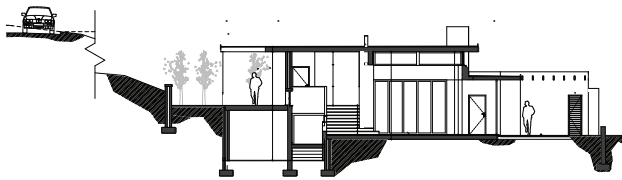
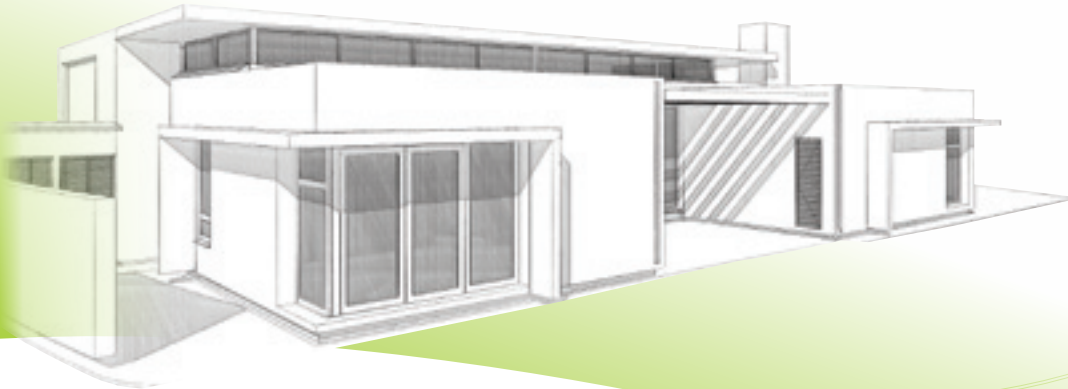
Contemporary
living in the heart of NATURE



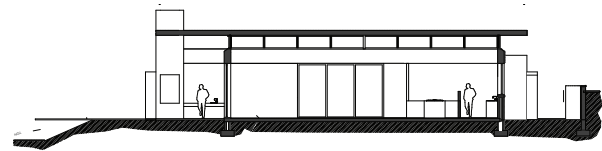

hopewell
CONSERVATION
ESTATE

Tel: 041 450 0381
www.hopewellconservation.co.za

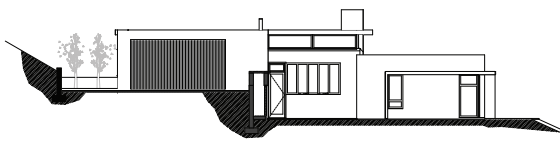
HOUSE 4 - ARCHITECTURAL PLAN



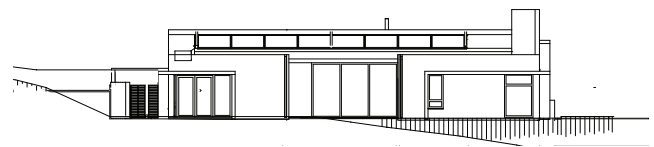
SECTION A



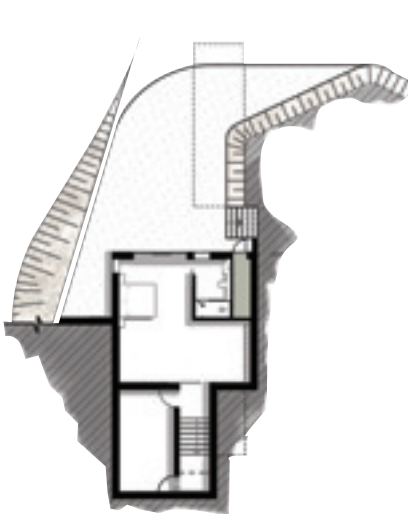
SECTION B



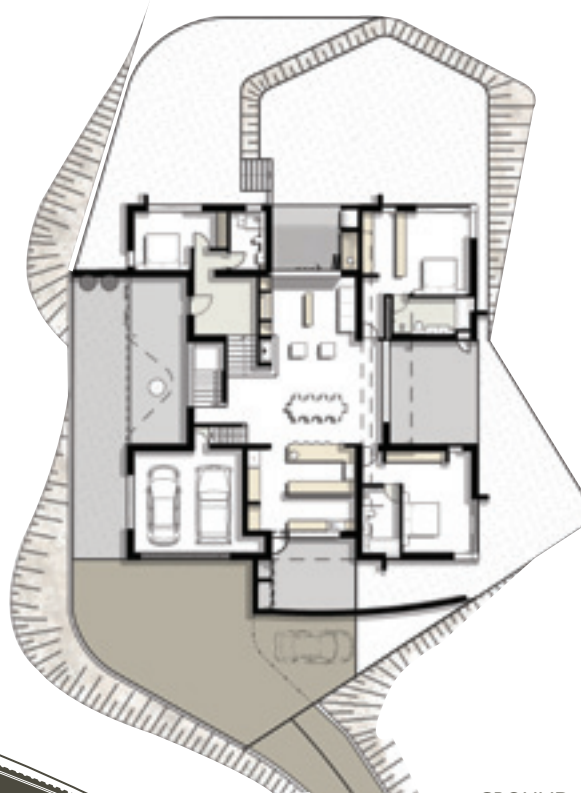
S++VATION



EAST ELEVATION



LOWER GROUND



GROUND

AREA

SQM

• Living, Dining	43
• Kitchen	16
• Guest WC	6
• Scullery	12
• Garage	35
• Entrance	12
• Bedroom 1	31
• Bedroom 1 en-suite	9
• Bedroom 2	26
• Bedroom 2 en-suite	8
• Bedroom 3/ Study	17
• Bedroom 4 / Rec. Room	39
• Bedroom 4 en-suite	6
• Wine Cellar	17
• TOTAL INSIDE	277
• Covered Entrance Patio	27
• Covered Verandahs	45
• Yard	20
• TOTAL OUTSIDE	92